

Name:		
Location:		
Email:		
Phone:	Cell:	
Fax:	Cover: Enduro-Loc™ KEDER	
Length:	Centers:	Arc:
Rafter Coating: ASTM-A123 Hot Dip Galvanized 3.9 mils Zinc		
Foundation:		

47' PROFILE

INFINITY TRUSS

Notes: **BASE PLATES BOTH SIDES**

PROFILE SUBJECT TO CHANGE

THIS DOCUMENT CONTAINS
INFORMATION PROPRIETARY TO
ACCU-STEEL INC. IT SHALL NOT BE
REPRODUCED, USED, OR DISCLOSED
WITHOUT PRIOR WRITTEN
PERMISSION OF ACCU-STEEL INC.

Date: 07/22/2021

Project:

Drawn By: PRS

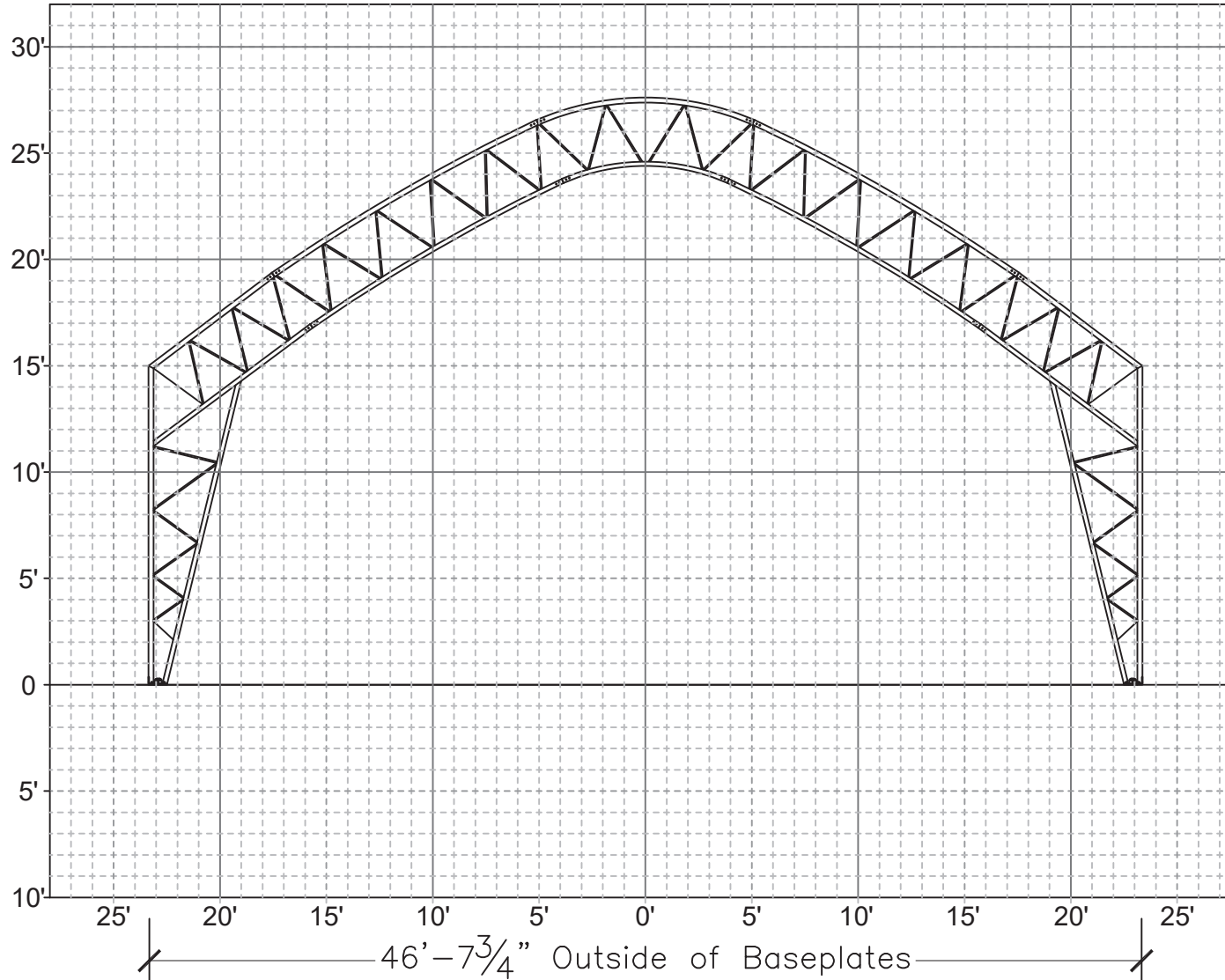
Sales #



1-877-338-6936

www.asicoverbuildings.com

sales@asicoverbuildings.com



46'-7³/₄" Outside of Baseplates

1'x1' GRID