

Name:		
Location:		
Email:		
Phone:		Cell:
Fax:		Cover: Enduro-Loc™ KEDER
Length:	Centers:	Arc:
Rafter Coating: ASTM-A123 Hot Dip Galvanized 3.9 mils Zinc		
Foundation:		

145' PROFILE INFINITY TRUSS

THIS DOCUMENT CONTAINS
INFORMATION PROPRIETARY TO
ACCU-STEEL INC. IT SHALL NOT BE
REPRODUCED, USED, OR DISCLOSED
WITHOUT PRIOR WRITTEN
PERMISSION OF ACCU-STEEL INC.



Notes: BASE PLATES BOTH SIDES

Date: 07/22/2021

Project:

Drawn By: PRS

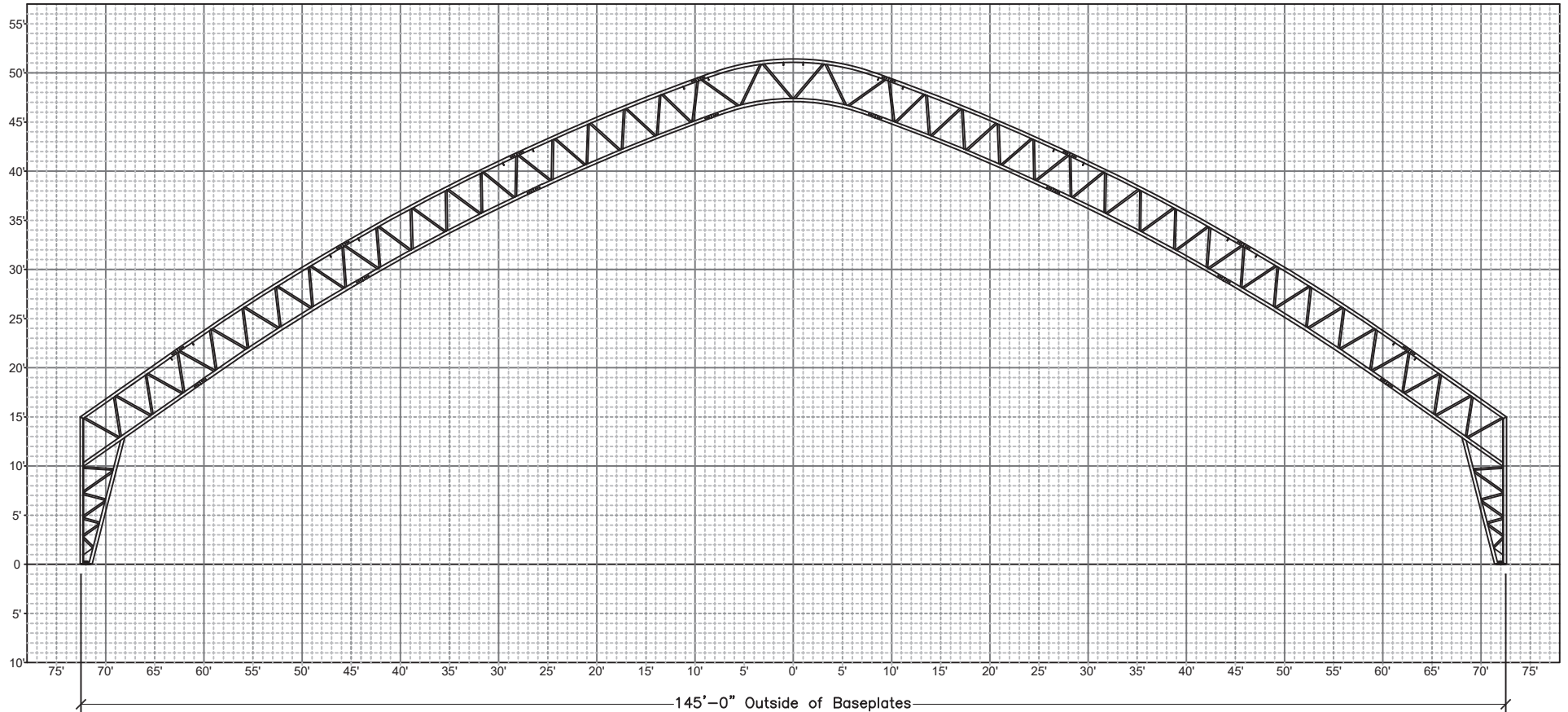
Sales #

1-877-338-6936

www.asicoverbuildings.com

sales@asicoverbuildings.com

PROFILE SUBJECT TO CHANGE



1'x1' GRID