

Name:		
Location:		
Email:		
Phone:		Cell:
Fax:		Cover: Enduro-Loc™ KEDER
Length:	Centers:	Arc:
Rafter Coating: ASTM-A123 Hot Dip Galvanized 3.9 mils Zinc		
Foundation:		

# 108' HIGH PROFILE INFINITY TRUSS

Notes: BASE PLATES BOTH SIDES

PROFILE SUBJECT TO CHANGE

THIS DOCUMENT CONTAINS  
INFORMATION PROPRIETARY TO  
ACCU-STEEL INC. IT SHALL NOT BE  
REPRODUCED, USED, OR DISCLOSED  
WITHOUT PRIOR WRITTEN  
PERMISSION OF ACCU-STEEL INC.

Date: 07/22/2021

Project:

Drawn By: PRS

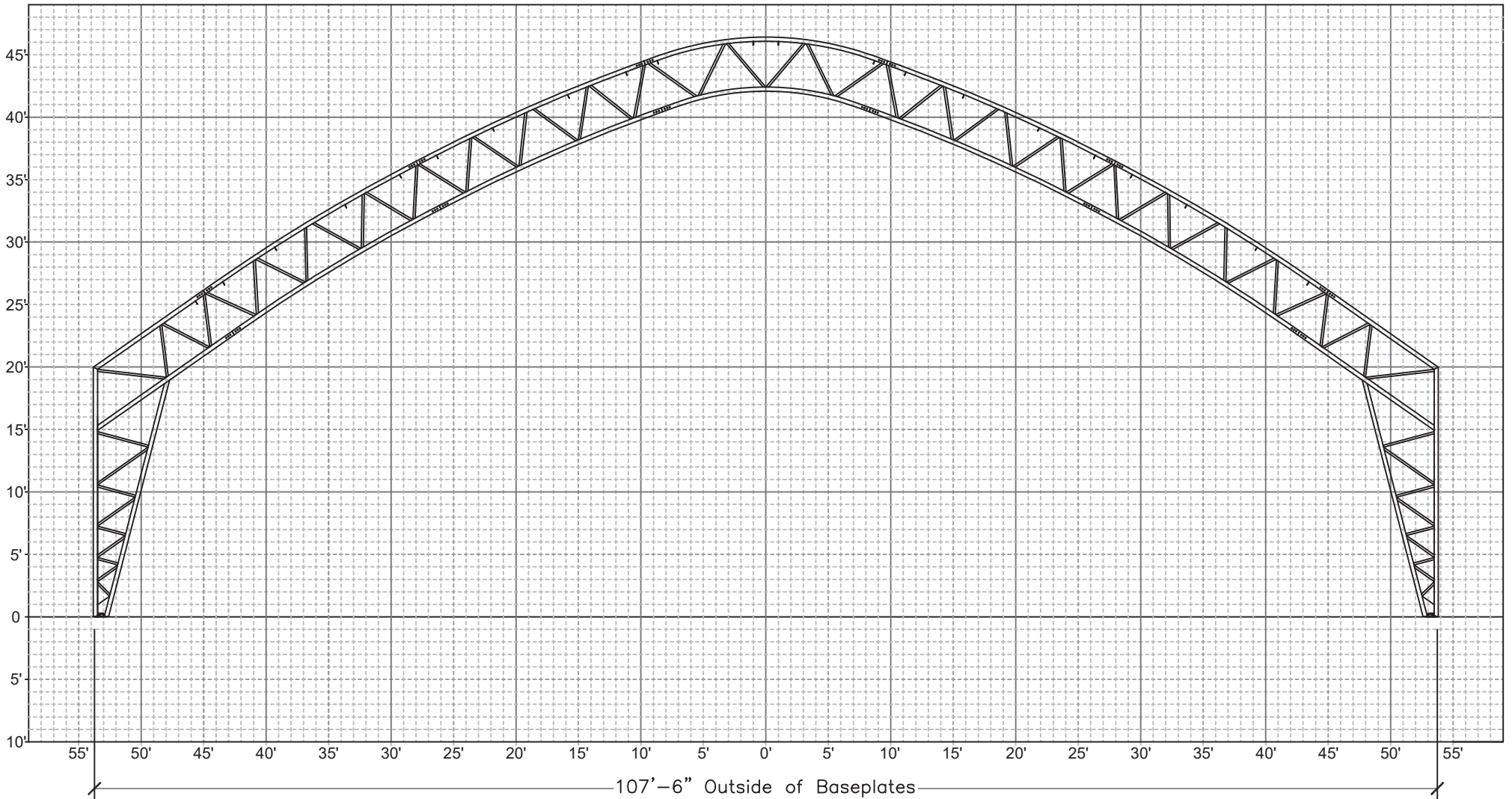
Sales #



1-877-338-6936

www.asicoverbuildings.com

sales@asicoverbuildings.com



1'x1' GRID