

Name:		
Location:		
Email:		
Phone:	Cell:	
Fax:	Cover: Enduro-Loc™ KEDER	
Length:	Centers:	Arc:
Rafter Coating: ASTM-A123 Hot Dip Galvanized 3.9 mils Zinc		
Foundation:		

# 74'-8" CATTLE BUILDING

## INTEGRITY TRUSS

Notes: BEAMS BOTH SIDES  
 STANDARD EAVES BOTH SIDES  
 PROFILE SUBJECT TO CHANGE

THIS DOCUMENT CONTAINS  
 INFORMATION PROPRIETARY TO  
 ACCU-STEEL INC. IT SHALL NOT BE  
 REPRODUCED, USED, OR DISCLOSED  
 WITHOUT PRIOR WRITTEN  
 PERMISSION OF ACCU-STEEL INC.

Date: 01/03/19

Project:

Drawn By: JTK

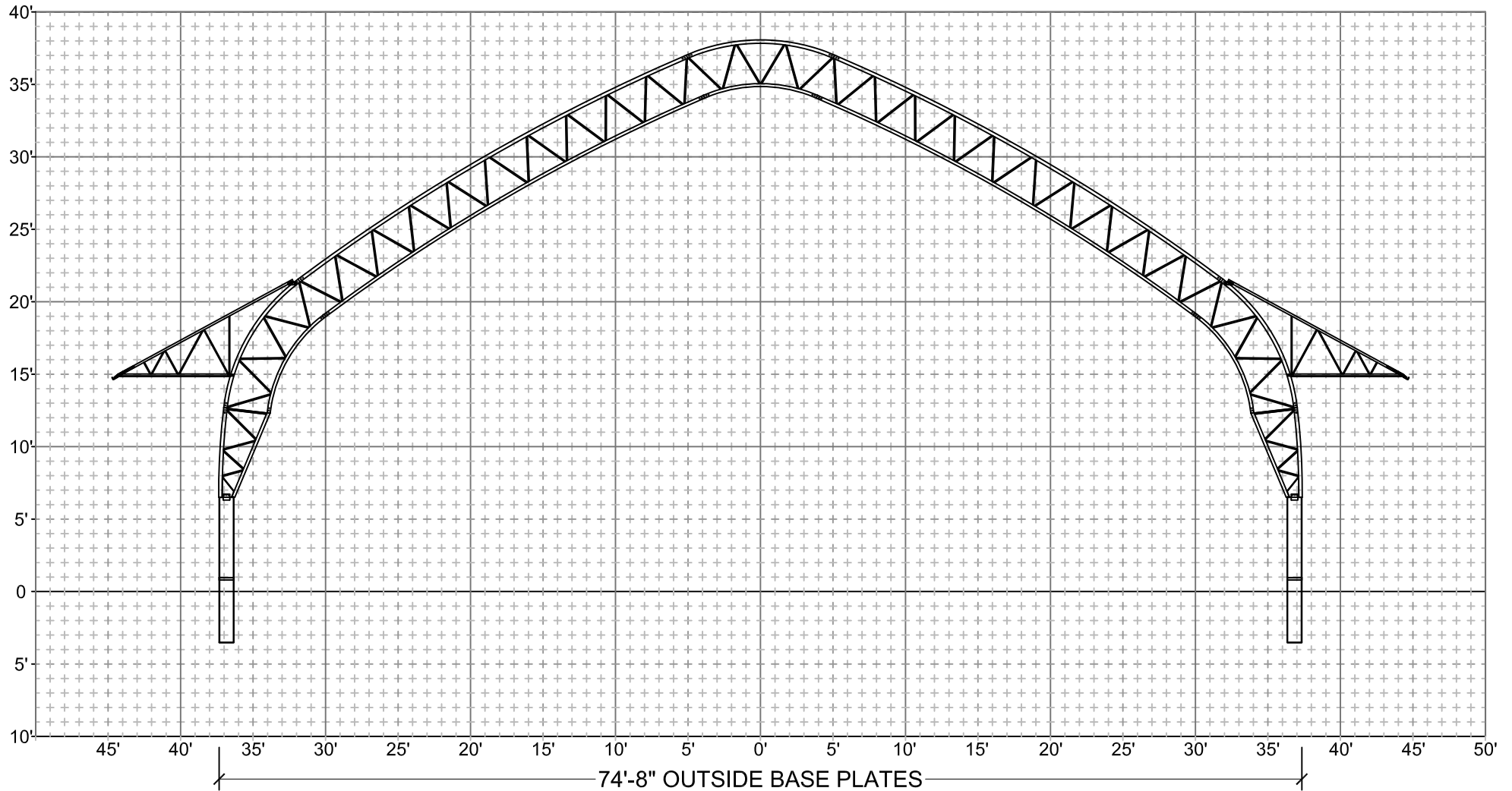
Sales #



1-877-338-6936

www.asicoverbuildings.com

sales@asicoverbuildings.com



74'-8" OUTSIDE BASE PLATES

1'x1' GRID